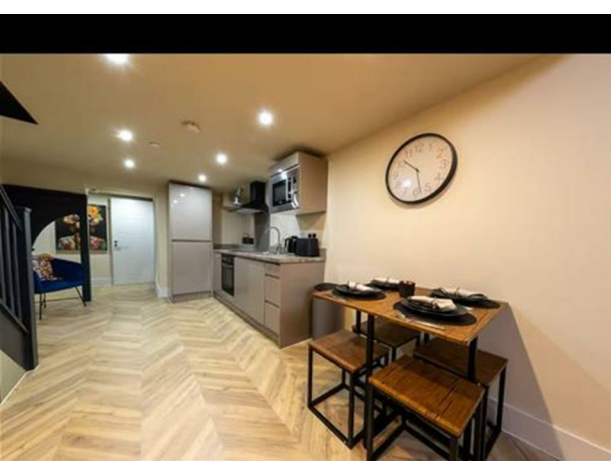
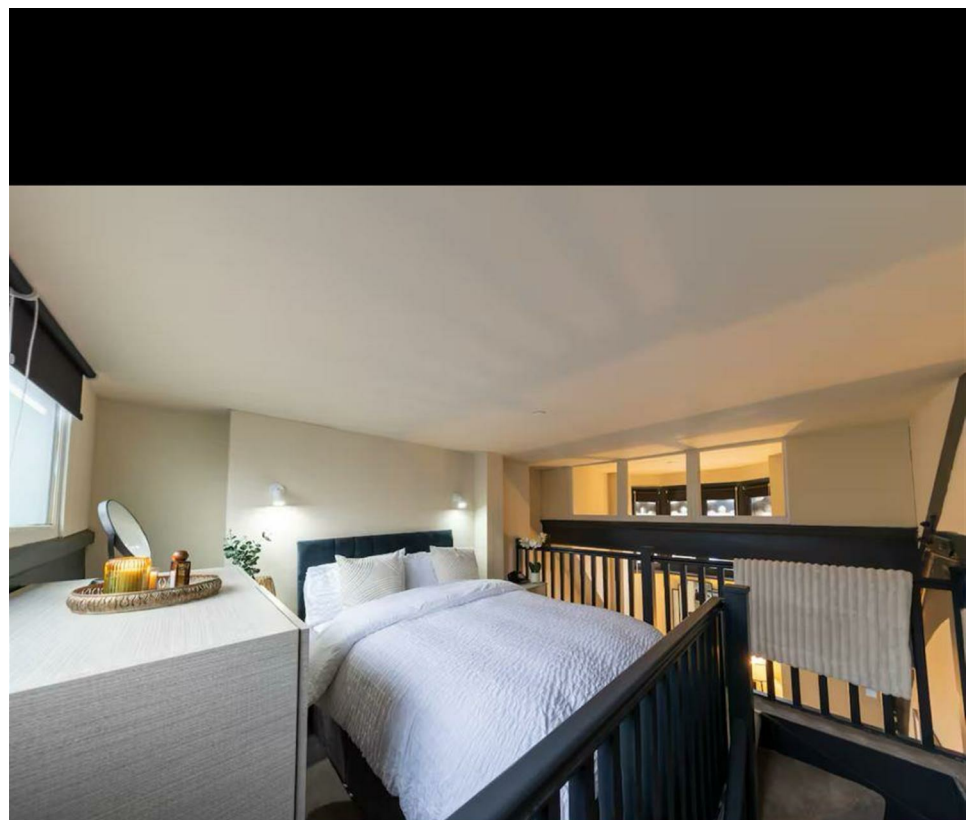
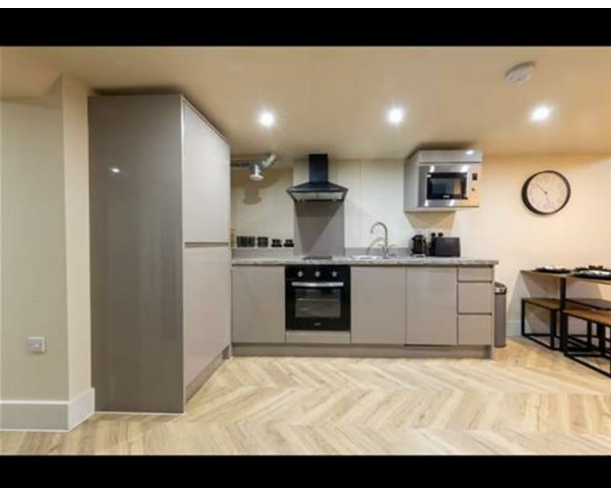
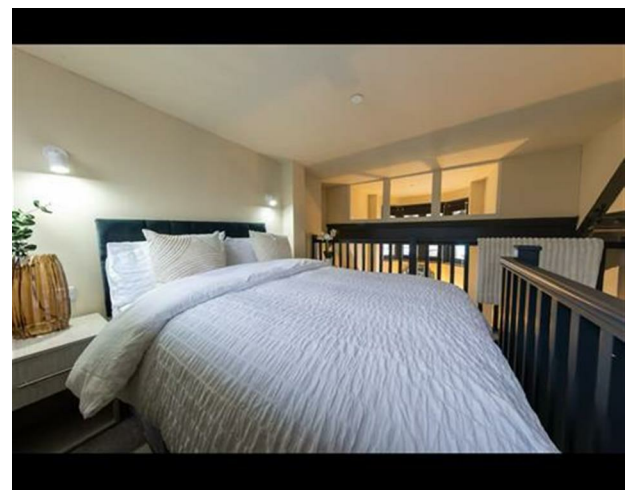
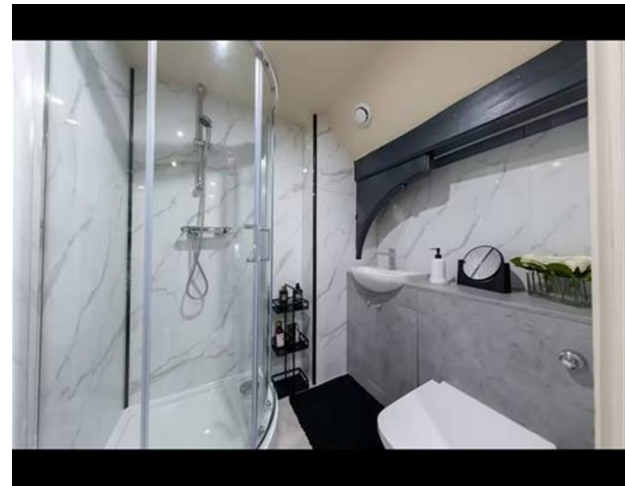


APT 38 - Athenaeum Residence, 147 - 157 The Headrow,
Leeds, LS1 5EW
£1,375 Per month

V&L
PROPERTIES



APT 38 - Athenaeum Residence, 147 - 157 The Headrow, Leeds, LS1 5EW

£1,375 Per month

Council Tax Band: C

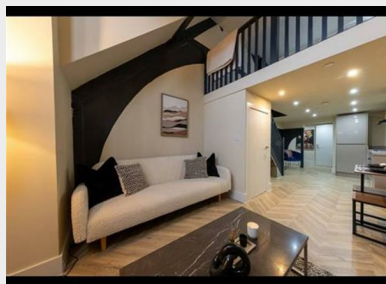
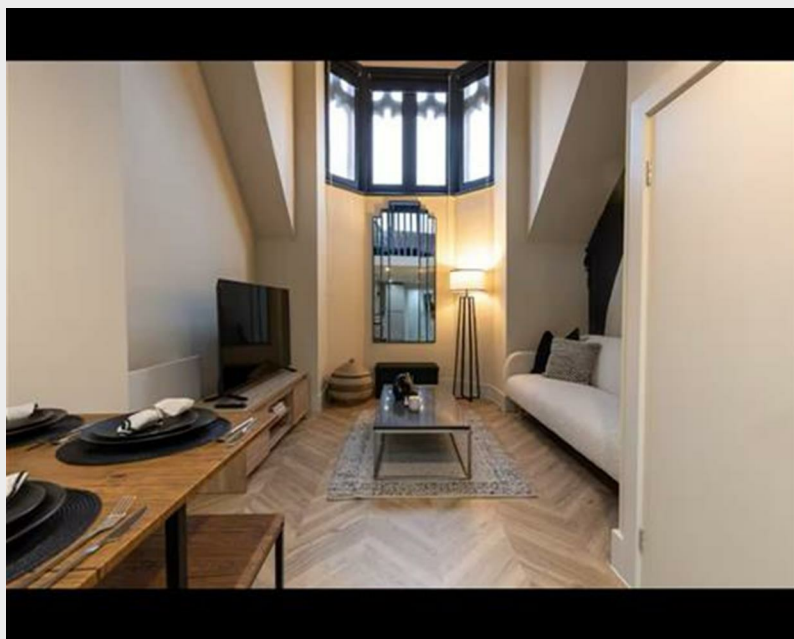
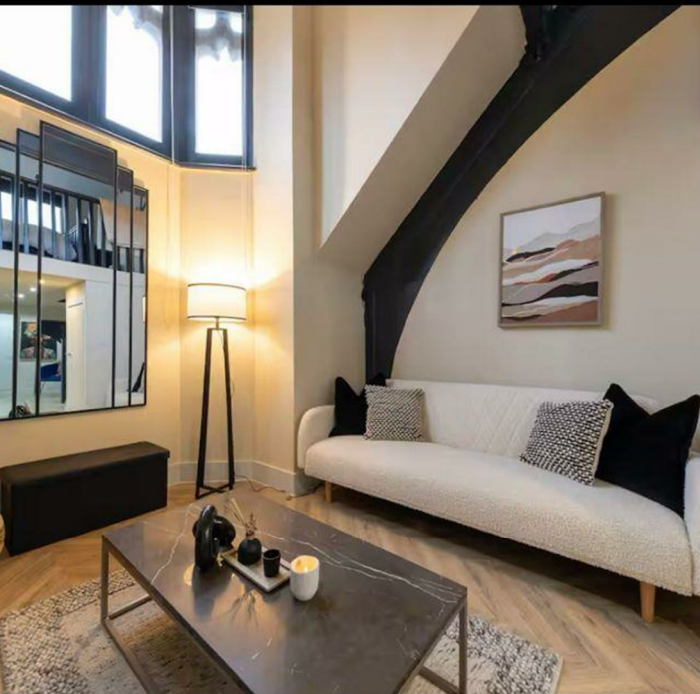
AH38

Nestled in the heart of Leeds, this charming fourth-floor apartment at 147A The Headrow offers a delightful urban living experience. With one well-proportioned bedroom, this property is perfect for individuals or couples seeking a comfortable and convenient home. The apartment features a spacious reception room, ideal for relaxation or entertaining guests, and a modern bathroom that caters to all your needs.

The location is truly exceptional, placing you within easy reach of the vibrant city centre, where you can enjoy a plethora of shops, restaurants, and cultural attractions. The Headrow is known for its lively atmosphere, making it an ideal spot for those who appreciate the buzz of city life.

This apartment is available for rent only, providing a fantastic opportunity for anyone looking to immerse themselves in the dynamic lifestyle that Leeds has to offer. With its prime location and well-designed living space, this property is not to be missed. Embrace the chance to make this apartment your new home in one of the UK's most exciting cities.





22 Regent Street
 Leeds
 LS2 7QA
 01133 225737
info@vgl-properties.co.uk
vgl-properties.co.uk

Energy Efficiency Rating		Current	Potential
<i>Very energy efficient - lower running costs</i>			
(92 plus) A			
(81-91) B			
(69-80) C		78	78
(55-68) D			
(39-54) E			
(21-38) F			
(1-20) G			
<i>Not energy efficient - higher running costs</i>			
England & Wales		EU Directive 2002/91/EC 